



GAT MONTHLY MEMBERSHIP PROGRESS REPORT

Results as of: 4/30/2022

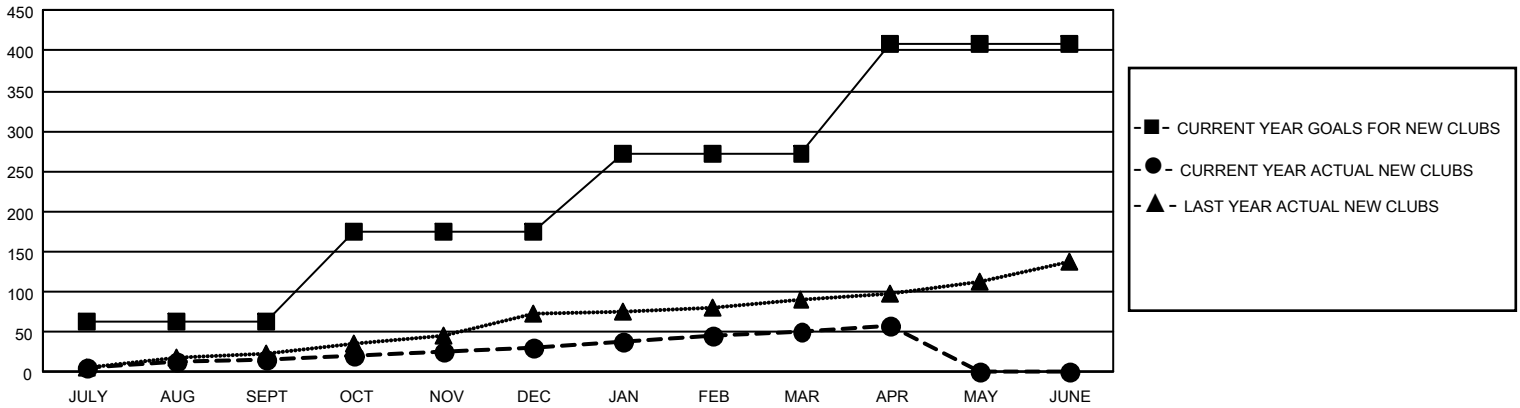
GAT Constitutional Area 1

REPORT DOES NOT INCLUDE CLUBS IN UNDISTRICTED AREAS.

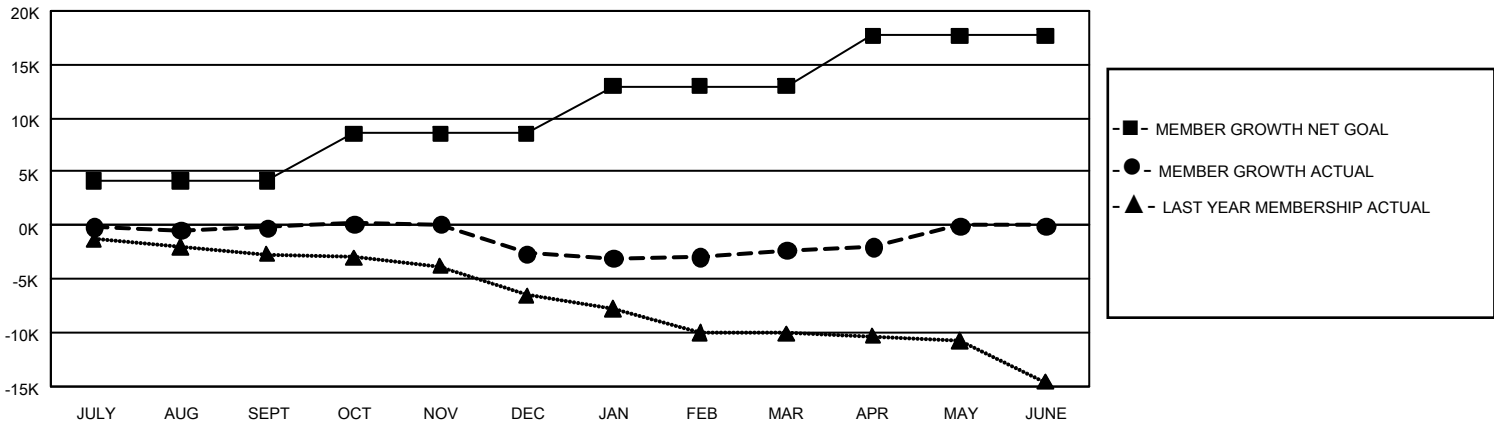
Clubs			
RESULTS FOR 2021-2022			
QUARTER	NEW CLUB GOAL	NEW CLUBS	DROPPED CLUBS
JULY/AUG/SEPT	192	16	127
OCT/NOV/DEC	330	16	114
JAN/FEB/MAR	294	18	55
APR/MAY/JUNE	411	7	8

Members			
RESULTS FOR 2021-2022			
QUARTER	MEMBER GROWTH NET GOAL	MEMBER GROWTH ACTUAL	DROPPED MEMBERS ACTUAL (including transfers)
JULY/AUG/SEPT	4133	8,772	7,719
OCT/NOV/DEC	4409	7,892	9,582
JAN/FEB/MAR	4451	8,201	6,911
APR/MAY/JUNE	4727	2,801	2,201

GOALS AND ACTUAL NEW CLUBS CUMULATIVE



GOALS AND ACTUAL MEMBERS CUMULATIVE



DROPPED CLUBS: 303	5,900 CLUBS OF 10,683 ADDED 1 OR MORE NEW MEMBERS	GENDER DISTRIBUTION
DROPPED MEMBERS	CLICK HERE FOR CUMULATIVE MEMBERSHIP DATA	MALE 178,097 (64.81%)
DECEASED 4,183		FEMALE 96,655 (35.17%)
CLUB CANCELLED 2,155		NON BINARY 7 (0.00%)
OTHER 20,072		PREFER NOT TO ANSWER 59 (0.02%)
TOTAL 26,410		TOTAL FAMILY UNIT MEMBERS 52,934
		FAMILY MEMBERS PAYING HALF DUES 27,217